

# MPS meets all 15 Guiding Principles

## PRINCIPLE 15 Administration of medicines by nurses

- All administration is recorded including syringe drivers.
- Nurses (RN or EN) are able to administer medicines using the role of 'Nurse'. Medication competent staff can administer using the 'Carer' role.
- Alternate administration statuses are available including refused, withheld, dose supplied.
- Visual patch management using avatar for accuracy.
- Record INR and BGL results during medication rounds with dosage calculated automatically.

## PRINCIPLE 14 Self-administration of medicines

- During a medication round a resident can be recorded as self-medicating for all medications or individual medications
- Residents can be set as self-administering ongoing if appropriate for all medications.
- Reports are still generated for residents who self-administer medications.

## PRINCIPLE 13 Storage and disposal of medicines

- Unwanted, ceased or expired medications are disposed of safely to avoid accidental harm or misuse.
- Disposal methods align with environmental and sustainable best practice.
- Part of the Return Unwanted Medications (RUM) Project.
- Packed in TGA packing facility under climate controlled conditions.
- MPS packing paper is of the highest quality to ensure medication is not exposed to moisture or heat.

## PRINCIPLE 12 Continuity of medicine supply, including in an emergency

- Pharmacy linked directly to the GPs order and the facility for real time updates on new medication supply or changed orders.
- Pharmacy provide regular daily delivery, urgent weekend delivery and 24/7 emergency supply.
- MPS PAK provides robust medication supply and disaster management.
- Sites holding imprest stock can commence a GPs order immediately.

## PRINCIPLE 11 Medication review

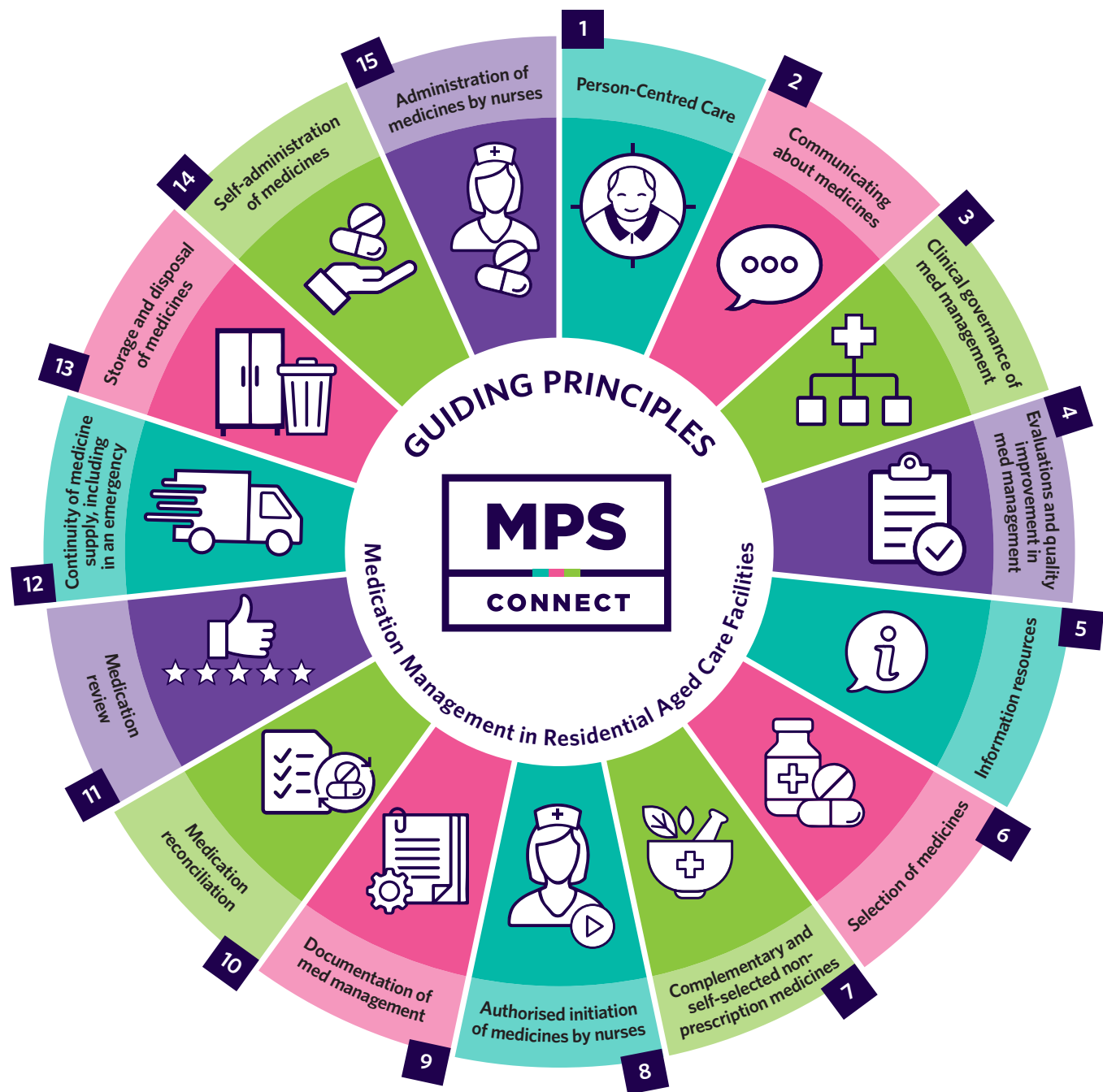
- Review 7 day administration history from resident's profile or older dates via reports.
- Generate reports focused on a large range of areas.
- Integration to RMMR providers.
- Each resident's medication summary is available for review.
- Prescribers are alerted when medication reviews are required.
- Access available for auditors and external clinicians.
- Prescribers can review administration at time of prescribing.

## PRINCIPLE 10 Medication reconciliation

- During medication rounds each medication must be noted as administered or an alternate status recorded.
- Medicine images are displayed with matching descriptions on Sachets.
- The number of medications packed are displayed.
- Original container medicines are noted.
- Resupply is limited to ensure duplicates are not ordered.
- Scripts are required for all dispensing.
- Imprest usage recorded.
- PRN and NIMs are recorded.

## PRINCIPLE 9 Documentation of medication management

- Clear and accurate details of medication administration history, medication orders, test results, resupply of medication and notes.
- All medication changes including new, ceased, increased dose, decreased dose are highlighted.
- All administrations are available via reporting.



## PRINCIPLE 8 Authorised initiation of medicines by nurses

- MPS MediSphere allows users to enter Nurse Initiated Medications as approved for their Residents. This can then be further filtered to individual consumers to allow administration depending on suitability.
- Reports are available including the effectiveness of the NIM.

## PRINCIPLE 1 Person-Centred Care

- Every resident has a photographic profile and is at the centre of their medication management.
- Residents can choose their pharmacy and when to substitute medications or products.
- Supporting resident independence by setting medications as self-administered where safe.
- Automatic prompts for Prescribers to review medication charts every 4 months.
- Linking residents to their family with MPS Family Portal, enabling full visibility of medication profile including any changes to prescribed medications made by Doctors.

## PRINCIPLE 2 Communicating about medicines

- Supporting of the safe and quality use of medicines across the entire medication management pathway.
- Real time prescribing.
- Doctors, pharmacy and care staff are linked via instant communication.
- MPS Family Portal keeps family and significant others informed of the medications profile.

## PRINCIPLE 3 Clinical governance of medication management

- Records accurate medication administration details.
- Prompts Second Checker login for S8 medicines and documents staff details.
- Identifies medication errors such as missed doses.
- Prompts alternate status to prevent doses incorrectly recorded as 'missed'.
- Large range of reports to audit medication use.
- NQIP data recorded - report templates available.
- Control user roles based on skill and state legislation.

## PRINCIPLE 4 Evaluations and quality improvement in medication management

- Generated reports for focus areas including: PRN use, Polypharmacy, Psychotropic Medication, Cytotoxic Medication, Antimicrobial
- Identify prescriber trends and need for RMMR based on medications prescribed and administered.
- Identifies trends for PRN, NIMS and refused medicines.
- Prompts to prescriber to review medication as per guidelines.

## PRINCIPLE 5 Information resources

- Store and record medication data which is easily accessible to all users.
- A broad range of notes and test results can be recorded during administration. This information is also available via reports.
- Integrate with Clinical Suites, MHR, pain management tools and more.

## PRINCIPLE 6 Selection of medicines

- MPS MediSphere links to HealthStream & eNRM giving the GP a wide choice of medications available for selection when prescribing.
- Resident or their family can request specific brands or substitutes of medications.
- Natural therapies can be recorded and promoted.
- Prevents prescriptions that conflict with a resident's profile eg. all medicines must be crushed, can't prescribe a non crushable medication.

## PRINCIPLE 7 Complementary and self-selected non-prescription medicines

- Resident's have access to a wide range of products available from their pharmacy that can be ordered through MediSphere and HealthStream.
- Dietitians can be enabled as users and can prescribe for residents.
- Natural therapies can be prescribed and recorded.